



# **SL3131 Parts Manual Phase 8**

---

**American Dryer Corporation**  
88 Currant Road  
Fall River, MA 02720-4781  
Telephone: +1 (508) 678-9000 / Fax: +1 (508) 678-9447  
e-mail: techsupport@amdry.com

**[www.amdry.com](http://www.amdry.com)**

# Retain This Manual In A Safe Place For Future Reference

This product embodies advanced concepts in engineering, design, and safety. If this product is properly maintained, it will provide many years of safe, efficient, and trouble free operation.

***ONLY properly licensed technicians should service this equipment.***

**OBSERVE ALL SAFETY PRECAUTIONS** displayed on the equipment or specified in the installation manual included with the dryer.

## FOR YOUR SAFETY

Do not store or use gasoline or other flammable vapors and liquids in the vicinity of this or any other appliance.

## POUR VOTRE SÉCURITÉ

Ne pas entreposer ni utiliser d'essence ni d'autres vapeurs ou liquides inflammables à proximité de cet appareil ou de tout autre appareil.

We have tried to make this manual as complete as possible and hope you will find it useful. The manufacturer reserves the right to make changes from time to time, without notice or obligation, in prices, specifications, colors, and material, and to change or discontinue models.

## Important

For your convenience, log the following information:

DATE OF PURCHASE \_\_\_\_\_ MODEL NO. **SL3131**

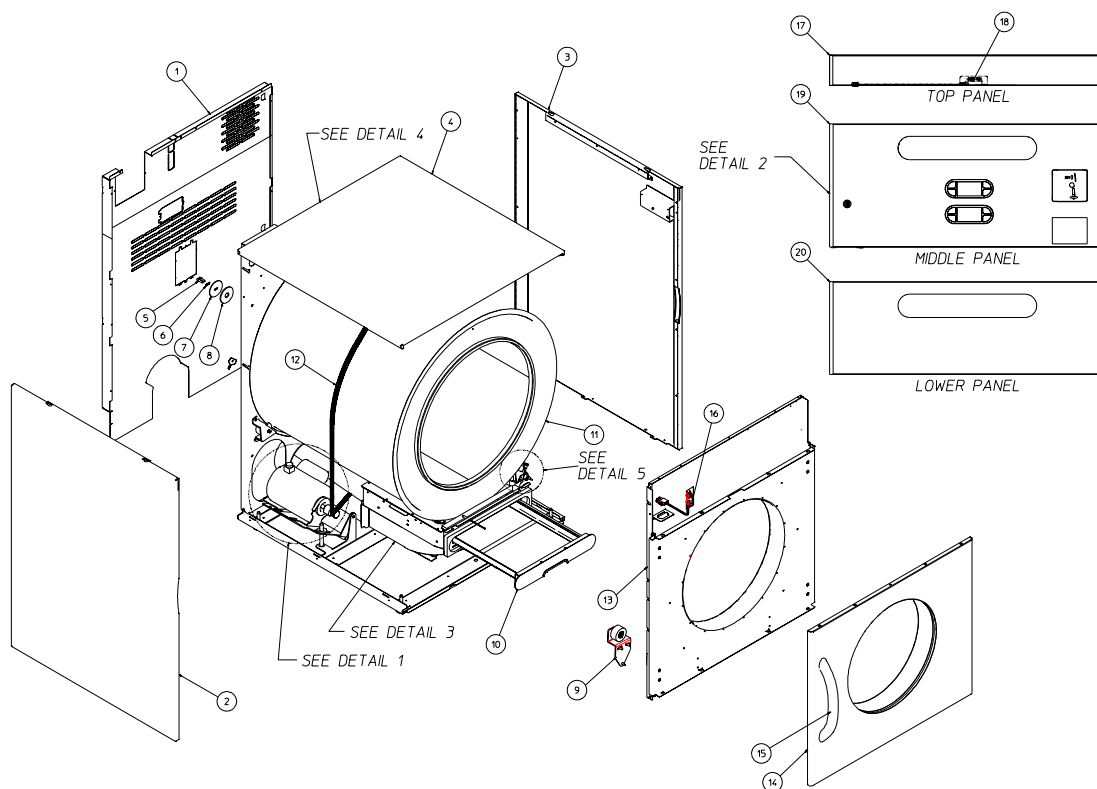
RESELLER'S NAME \_\_\_\_\_

Serial Number(s) \_\_\_\_\_

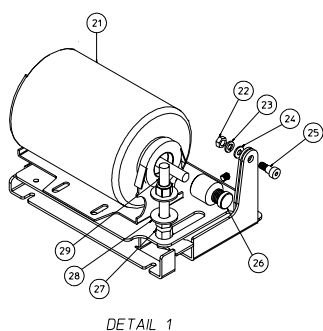
\_\_\_\_\_

\_\_\_\_\_

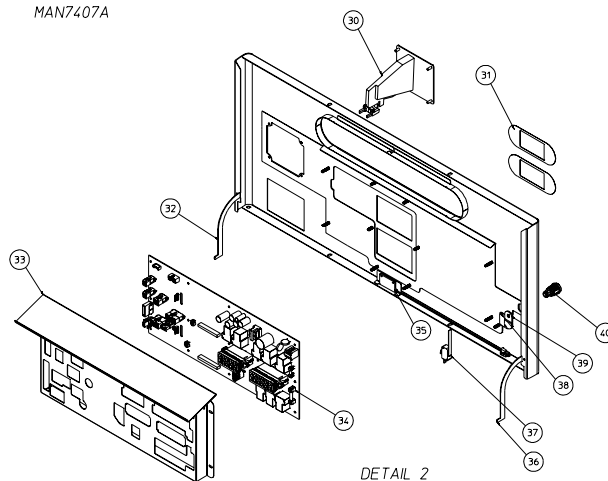




MAN7407A



DETAIL 1

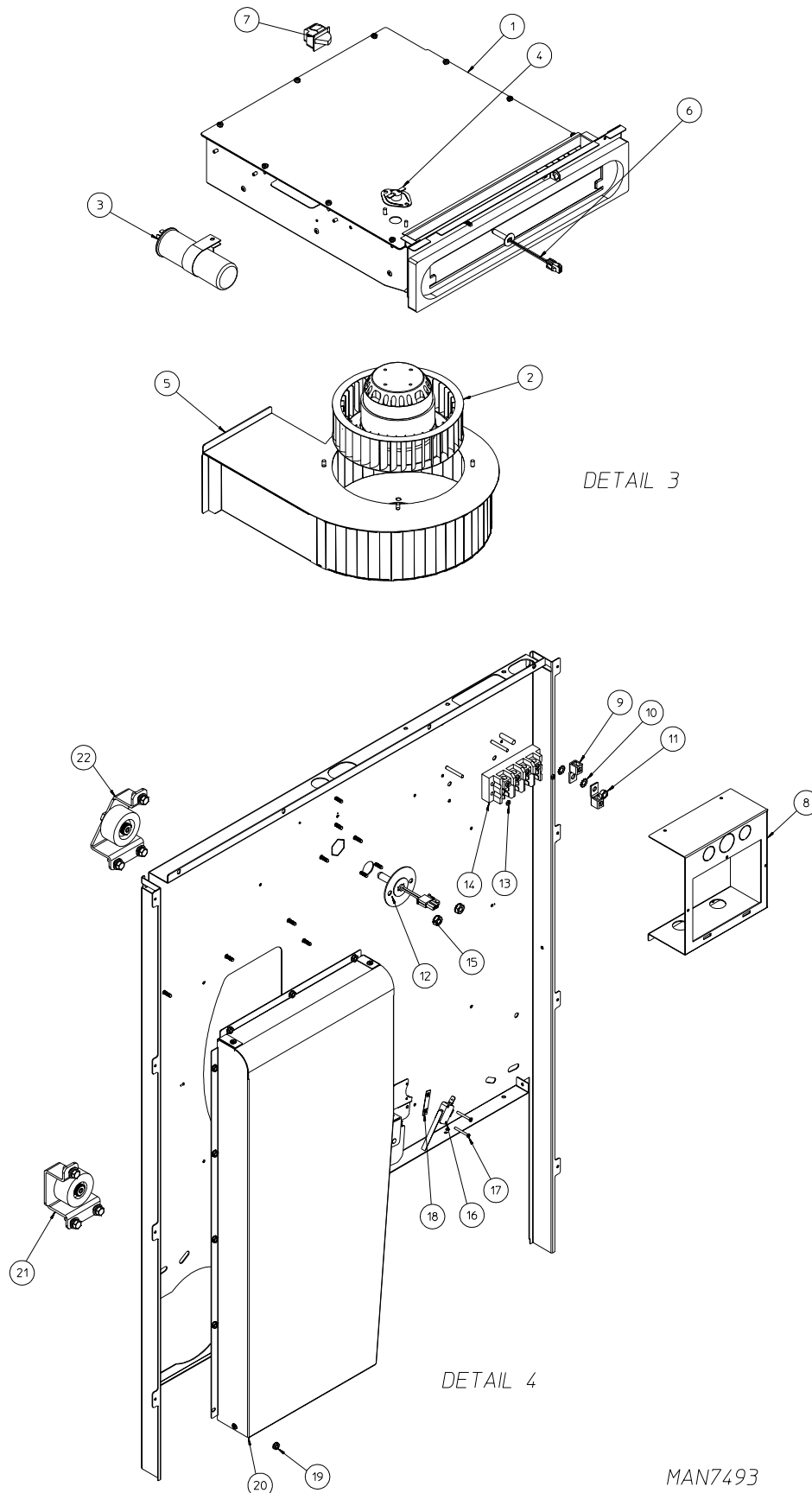


DETAIL 2

<u>Illus. No.</u>	<u>Part No.</u>	<u>Qty.</u>	<u>Description</u>
1	319427	1	Upper Back Guard (Gas and Electric)
	319426	1	Lower Back Guard (Gas and Electric)
	319435	1	Upper Back Guard (Steam) (For models mfd. as of December 7, 2005)
	319542	1	Upper Back Guard (Steam) (For models mfd. prior to December 7, 2005)
	319436	1	Back Guard Lower (Steam) (For models mfd. as of December 7, 2005)
	319543	1	Back Guard Lower (Steam) (For models mfd. prior to December 7, 2005)
	319437	1	Back Guard Right (Steam) (For models mfd. as of December 7, 2005)
	319544	1	Back Guard Right (Steam) (For models mfd. prior to December 7, 2005)
	819449	1	Exhaust Transition Piece for Formed Blower Housing (Gas and Electric)
	318927	1	Exhaust Transition Piece for Made In House Blower Housing (Gas and Electric)
2	819619	1	Left Side Panel Assembly (For models mfd. as of December 7, 2005)
	818679	1	Left Side Panel Assembly (For models mfd. prior to December 7, 2005)
3	819621	1	Right Side Panel Assembly (For models mfd. as of December 7, 2005)
	818678	1	Right Side Panel Assembly (For models mfd. prior to December 7, 2005)
4	818690	1	Outer Top Panel Assembly

# Parts List

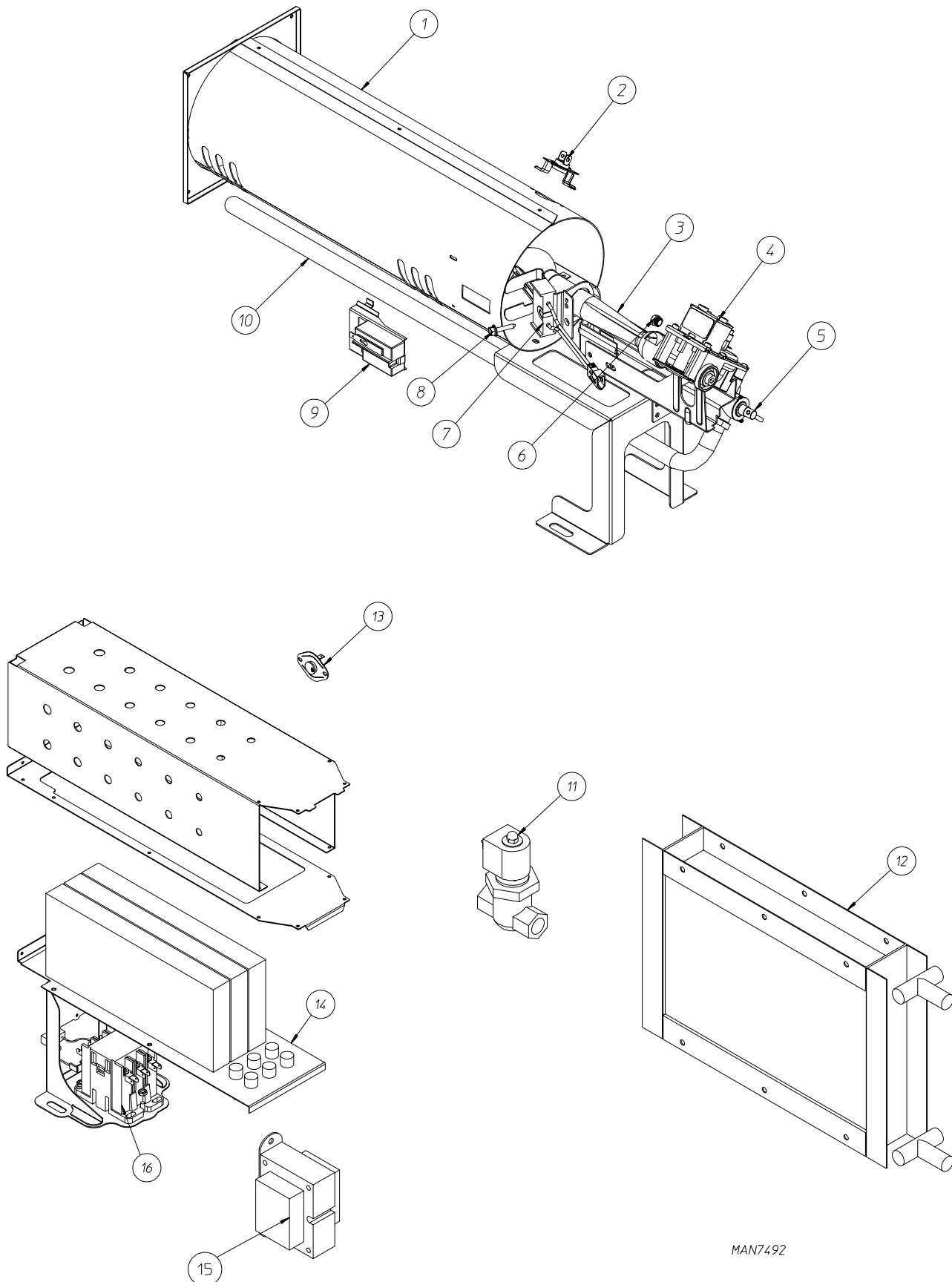
<u>Illus. No.</u>	<u>Part No.</u>	<u>Qty.</u>	<u>Description</u>
5	150445	2	1/4-20 x 3/4" Bolt
6	153072	2	Spring Washer
7	318891	1	Backup Washer
8	153048	2	Friction Pad (Gas and Electric)
	102373	2	Friction Pad (Steam)
9	818183	1	Front Right Wheel Assembly (parts breakdown on page 11)
	818184	1	Front Left Wheel Assembly (parts breakdown on page 11)
10	819288	1	Lint Screen Assembly (Painted)
	819315	1	Lint Screen Assembly (Stainless Steel)
11	818815	1	Tumbler Assembly (Galvanized)
	819398	1	Tumbler Assembly (Stainless Steel)
12	102407	1	Belt
13	819132	1	Front Panel Assembly (Coin)
	819359	1	Front Panel Assembly (Non-Coin [OPL])
	102004	2	Magnet
	102005	2	Magnet Blank
	152224	4	Magnet Screw
	400563	1	Magnet Removal Bit
14	819301	1	Door Assembly Right Hinge (White)
	819388	1	Door Assembly Right Hinge (Stainless Steel)
	819700	1	Door Assembly Left Hinge (White)
	819387	1	Door Assembly Left Hinge (Stainless Steel)
	102396	1	Door Gasket
	103067	2	Door Hinge
15	170233	1	Handle
16	819194	1	Rotation Sensor Assembly
17	819190	1	Top Trim Panel Assembly (White)
	819192	1	Top Trim Panel Assembly (Stainless Steel)
18	819196	1	Door Switch Assembly
19	819504	1	Phase 8 Control Door Assembly (25¢ Coin)
	819625	1	Phase 8 Control Door Assembly (Programmable – Euro)
	819608	1	Phase 8 Control Door Assembly (Non-Coin [OPL])
	154061	8	U-Nut Retainer
	183129	8	T-20 Truss Head Machine Screw
20	185097	1	Toe Panel (White)
	185048	1	Toe Panel (Stainless Steel)
21	884288	1	1/4 hp Motor with Sheave – 60 Hz (For models mfd. as of September 1, 2005)
	887030	1	1/4 hp Motor with Sheave – 50 Hz (For models mfd. as of September 1, 2005)
	818485	1	Motor Assembly (For models mfd. prior to September 1, 2005)
22	152004	2	5/16-18 Hex Nut
23	153002	2	5/16" Split Lock Washer
24	153018	2	1/4" Flat Washer
25	154266	2	3/8" x 3/8" (5/16-18) Screw
26	318909	1	Motor Sheave – 60 Hz
	185067	1	Motor Sheave – 50 Hz
27	152011	1	1/2-13 Hex Nut
	152028	1	1/2-13 Nylon Insert Locknut
28	153011	1	9/16" ID, 1-3/8" OD Flat Washer
29	150609	1	1/2-13 x 4-1/2" Tap Bolt
30	818213	1	Coin Acceptor Assembly (25¢ Coin)
	819264	1	Coin Acceptor (Programmable – Euro)
31	112587	2	Keypad (Coin)
	112586	2	Keypad (Non-Coin [OPL])
32	318930	1	Control Panel Right Hinge
33	319337	1	Phase 8 Control Cover
34	887102	1	Phase 8 Computer
	887103	1	Phase 8 Computer with "S.A.F.E." System Option
35	819196	1	Door Switch Assembly
36	318929	1	Control Panel Left Hinge
37	122200	1	Program Switch (For models mfd. prior to February 28, 2007)
38	154004	1	Twin Speed Nut (For models mfd. prior to February 28, 2007)
39	160066	1	1-1/8" Long Cam (For models mfd. prior to February 28, 2007)
40	160071	1	Lock (For models mfd. as of February 28, 2007)
	160038	1	Lock (For models mfd. prior to February 28, 2007)
	160140	1	Key



## Parts List

---

<u>Illus. No.</u>	<u>Part No.</u>	<u>Qty.</u>	<u>Description</u>
1	819450	1	Lint Box / Blower Assembly Complete 120V (For models mfd. as of September 1, 2006)
	819193	1	Lint Box / Blower Assembly Complete 120V (For models mfd. prior to September 1, 2006)
	819233	1	Lint Box / Blower Assembly Complete 200-240V (For models mfd. prior to June 14, 2006 and as of December 20, 2006)
	819455	1	Lint Box / Blower Assembly Complete 200-240V (For models mfd. between June 14, 2006 and October 24, 2006)
	819193	1	Lint Box / Blower Assembly Complete 208-240V with Transformer (For models mfd. between October 25, 2006 and December 20, 2006)
2	851242	1	Blower Motor Assembly 120V (For models mfd. as of September 1, 2006)
	819185	1	Blower Motor Assembly 120V (For models mfd. prior to September 1, 2006)
	819232	1	Blower Motor Assembly 200-240V (For models mfd. prior to June 14, 2006 and as of December 21, 2006)
	851243	1	Blower Motor Assembly 200-240V (For models mfd. between June 14, 2006 and October 24, 2006)
	819185	1	Blower Motor Assembly 200-240V with Transformer (For models mfd. between October 25, 2006 and December 20, 2006)
3	100618	1	20 MFD Capacitor 120V (For models mfd. as of September 1, 2006)
	100639	1	32 MFD Capacitor 120V (For models mfd. prior to September 1, 2006)
	100638	1	8 MFD Capacitor 200-240V (For models mfd. prior to June 14, 2006 and as of December 21, 2006)
	100670	1	5 MFD Capacitor 200-240V (For models mfd. between June 14, 2006 and October 24, 2006)
	100639	1	32 MFD Capacitor 200-240V with Transformer (For models mfd. between October 25, 2006 and December 20, 2006)
4	130119	1	L190 Automatic Thermostat
5	185084	1	Blower Housing Formed with Back Draft Damper
	818545	1	Blower Housing Made In-House
6	818986	1	Exhaust Temperature Sensor Assembly
7	122003	1	Lint Door Switch
8	318993	1	Rear Electrical Box (Gas and Steam)
	319327	1	Rear Electrical Box (Electric)
	318727	1	Rear Electrical Box Cover
9	153021	1	1/4" Shakeproof Washer
10	121010	1	Terminal Lug
11	152002	1	1/4-20 Hex Nut
12	819188	1	Axial Temperature Sensor Assembly
13	152015	1	#8-32 Hex Nut
14	120728	1	Quick-Connect Terminal Block
15	153073	2	#8-32 KEPS Nut
16	122200	2	Sail Switch
17	150025	2	#4-40 x 1" Phillips Screw
18	154004	1	Twin Speed Nut
19	153073	14	#8-32 KEPS Nut
20	819113	1	Heat Duct with Sail Switch Assembly
21	818109	1	Front Left / Rear Right Wheel (Parts Breakdown on page 11)
22	818110	1	Front Right / Rear Left Wheel (Parts Breakdown on page 11)



MAN7492

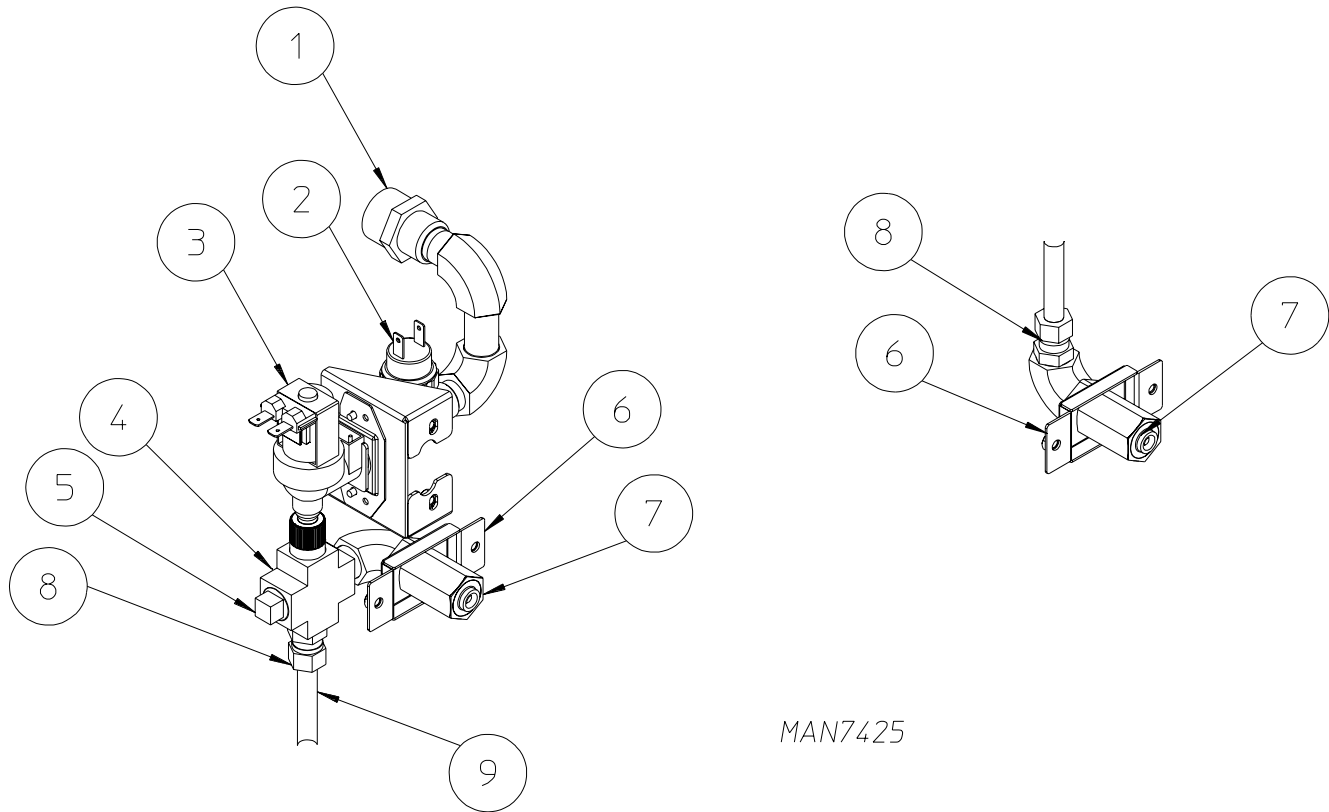


## Parts List

---

<u>Illus. No.</u>	<u>Part No.</u>	<u>Qty.</u>	<u>Description</u>
1	819314	1	Burner Assembly
	819313	1	Burner Chamber
2	183112	1	Thermostat, Gas High-Limit
3	183144	1	Inshot Burner Tube, Hot Surface Ignition
4	128944	1	Gas Valve 120 VAC 60 Hz
	128907	1	Gas Valve 120 VAC 50 Hz
	884254	1	Liquid Propane Conversion Kit
	141318	1	3/8" 90° Union Shutoff
6	140880	1	Natural Gas #22 Burner Orifice
	140905	1	Liquid Propane Gas #44 Burner Orifice
7	128910	1	Global®
8	183145	1	#8-32 x 7/8" Hex Screw with Washer
9	130500	1	Radiant Control
10	185096	1	3/8" N.P.T. Male 90° Gas Pipe
	142953	1	1/2" x 3/8" Reducer
11	819579	1	Steam Valve Assembly 120V
12	165066	1	Copper Steam Coil
13	183112	1	High-Limit Thermostat
14	119995	1	Electric Element
15	819712	1	120V to 24V Transformer
	819251	1	208V to 24V Transformer
	819267	1	240V to 24V Transformer
	132029	1	208-240V to 120V Transformer
16	131352	1	40-amp 24V Contactor
	131357	1	50-amp 24V Contactor
	131321	1	30-amp 120V Contactor
	131325	1	50-amp 120V Contactor
	131324	1	40-amp 208-240V Contactor

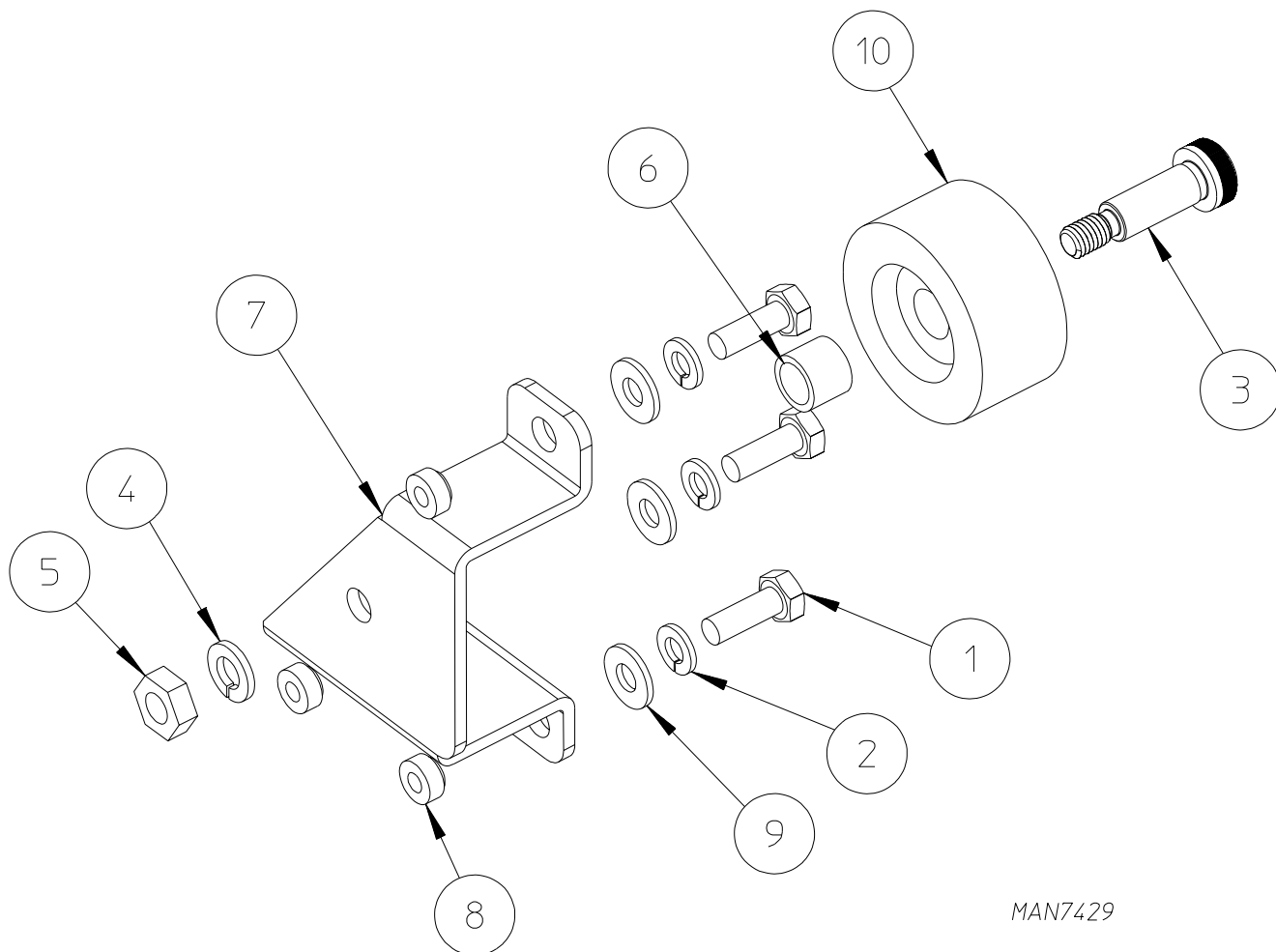
## S.A.F.E. System Assembly Parts Diagram / List



MAN7425

<u>Illus. No.</u>	<u>Part No.</u>	<u>Qty.</u>	<u>Description</u>
1	143025	1	Nylon Hose Adaptor
2	136987	1	Pressure Switch
3	165120	1	Water Valve
4	143236	1	3/8" Brass Cross
5	143251	1	3/8" Plug
6	318422	1	S.A.F.E. Bracket
7	143581	1	Spray Nozzle
8	143208	1	3/8" Brass Connector
9	143099	1	3/8" OD Copper Tubing

## Wheel Assembly Parts Diagram / List



MAN7429

<u>Illus. No.</u>	<u>Part No.</u>	<u>Qty.</u>	<u>Description</u>
1	150510	3	1/4-20 x 3/4" Hex Head Machine Bolt
2	153007	3	1/4" Lock Washer
3	154267	1	M10 x 25mm Shoulder Screw
4	153002	1	5/16" Lock Washer
5	154013	1	M8 Hex Nut
6	154284	1	Tumbler Wheel Spacer
7	318233	1	Rear Right Roller Wheel Bracket
	318232	1	Rear Left Roller Wheel Bracket ... Not Illustrated
	318532	1	Front Right Wheel Bracket ... Not Illustrated
	318531	1	Front Left Wheel Bracket ... Not Illustrated
8	153564	3	1/4-20" Clinch Nut
9	153018	3	1/4" Flat Washer
10	180050	1	Wheel

